

OWNER'S MANUAL



www.titan-pro.co.uk

Operation Details Read and follow all instructions in this manual before use.

WARNING

This symbol points out important safety instructions, which if not followed, may result in personal injury. When you see the symbol, please read the instructions carefully.

1. Never allow children under 16 years old to operate this machine. Never operate this machine without proper instruction.
2. Familiarise yourself with all the controls and their proper operation.
5. Never run an engine indoors or in a poorly ventilated area.

6. Do not put hands and feet near rotating parts or in the hopper or discharge opening.
7. Do not put metal or stone into the machine.
8. Never wear loose clothes or long jewellery and keep your long hair under protective headgear when operating machine.
9. Never use the machine on a slope.
10. After each use and before starting ensure that the cutting drum and chipping chute are completely clear of material and rotates freely. Failure to do this may cause premature belt failure, which is not covered under warranty.

Unpack and check contents.

Remove all the items from the box.

Some items are stored in the hopper for ease of Transport. Be sure to remove all loose parts from Hopper, by removing M6 Flange bolts and lifting hopper lid. Photo1&2



2

Assembly should be carried out on a clean, level surface with a helper.

1. Take out the body from the box and place it on a level surface
- 2.

2. **Attaching front foot to the basic machine, see figure 2**

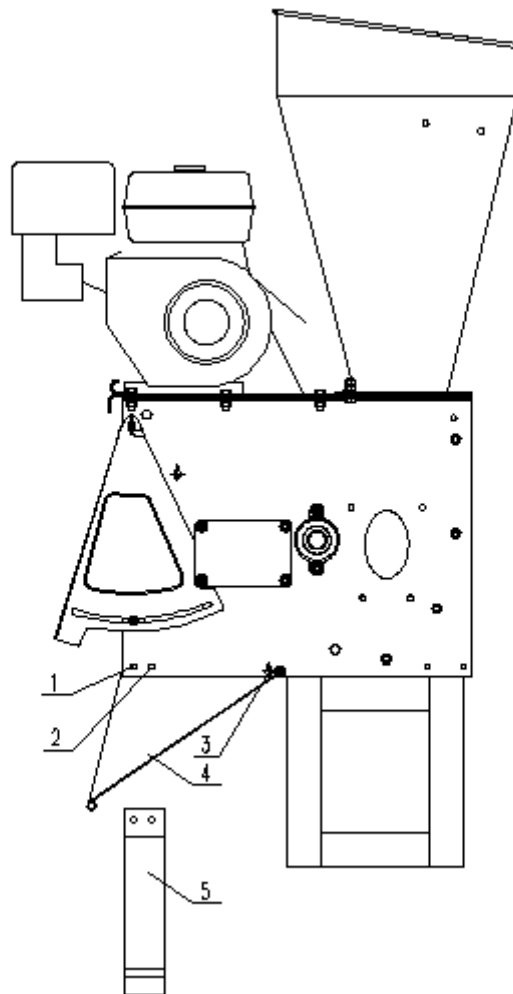


Figure 2

- 2.1. Remove the nuts from bolts 1, 2, remove the bolts and pipe spacer.
- 2.2. Attach front foot 5, to the side board of the parts box and align the mounting holes with holes 1, 2.
- 2.3. Put the pipe spacer that was removed in step 1 back in place. Insert the bolts and secure them tightly.

Please ensure Lower discharge chute is facing towards the ground and is **BELOW** the pipe spacer as shown in the photographs in this section

Correct Fitting position of Bottom Discharge Chute



Titan Pro Ltd

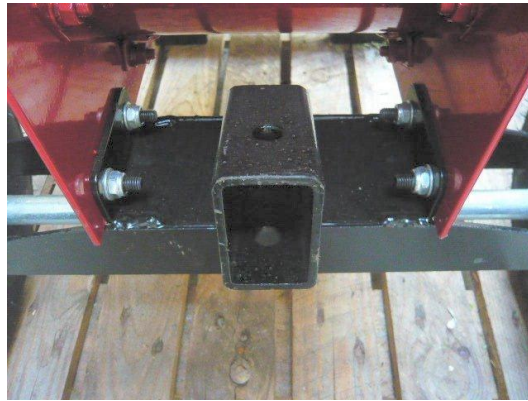
Incorrect fitting of Bottom Discharge Chute



Titan Pro Ltd

3. Attach axle brackets, axle and tires. See picture 3.

Photo 3



1. Put the rear axle bracket in place and align the mounting holes
2. Insert M8*20 bolt in holes from outside to inside and secure it slightly with washer and nut.

•

4. Attaching the chipper tube to the basic machine.





Figure 4

4.1. **Remove protective cover plate.**

Put the chipper tube in place on the side of the machine. Align the four mounting holes in the flange.

4.2. Secure the flange with M8 washers and nuts. Make sure the chipper tube is in the correct position before tightening up the nuts.

6. Mounting the two handles



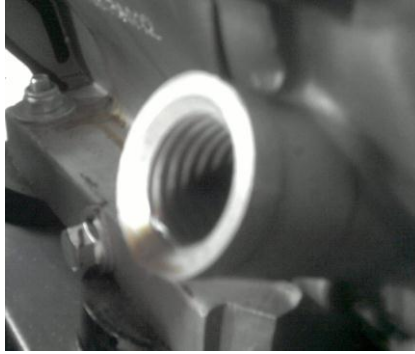
6.1 Secure the 2 hopper handles as shown Tighten M6 nuts from the inside of hopper. Bolt down hopper lid when completed.

8. Check all screws, bolts, and nuts and tighten them if loose.

9. Add unleaded fuel to engine.

9.1. There is **no oil** in the new engine.

9.2. Unscrew the black cover and pull the dipstick out. Use quality oil with a rating of 15W-40. **Fill to the top of the threads. There is a low oil cut out in the sump of this machine. IT WILL NOT START IF THE OIL IS LOW**



9.3. Refer to “starting the engine” for the instructions regarding adding fuel.

III. Safety Instructions

i. Training

Make sure you fully understand the owner’s manual before attempting to operate the machine.

ii. Preparation

1. Put the machine securely on a level surface.
2. Keep the operator area clear of other objects.
3. Wear ear protection, safety goggles and gloves while operating the machine.
4. Examine the machine to ensure its in good condition, check all the screws, nuts and other fasteners are properly secured and the screen is in place.
5. Attach the chip collection bag if required
6. Pay attention while handling fuels. They are flammable and the vapours are explosive. The points below should be followed.
 - Never remove the fuel cap or add fuel with engine running. Stop engine, allow engine and exhaust components to cool before refuelling.
 - Never add fuel to the machine indoors.
 - Do not smoke while adding fuel.
 - Never refuel or store the machine in a place where there is open flame, spark or other ignition source.
 - Do not attempt to start the engine if fuel has been spilled. Wipe away the spillage and remove it away from the area before starting the machine.
 - Always make sure the fuel cap is securely tightened and replace before starting the engine.
 - If the fuel tank needs to be drained, it should be done outdoors.
7. The starter handle is located on the side of the engine. Pull the starter handle to start the engine. Check the machine is in proper working condition after starting engine.
8. Chipper side chute—only allow twigs and branches up to 75mm in diameter to be fed into the impeller for chipping.

9. Chipping in main hopper, only allow leaves and small branches up to 10mm diameter to be fed into the funnel for chipping and shredding.

10. Lawn tractor or ATV trailer hitch—to be used for towing by lawn tractors or ATVs at speeds below 20kmh.

iii. Operation

After each use ensure that the cutting chamber and the top and side chutes are completely clear , run machine until all produce is expelled from the machine

Failure to do this may cause premature belt failure, which is not covered under warranty.

1. Make sure the plastic cover on upper hopper is closed when your shredder is running. Flying chips are very hazardous.
2. Use a rough wooden stick to push the material in to the feed hopper. Do not use your hands or metal tools.
3. Keep your face and body away from the feed intake opening.
4. Do not allow hands or any other parts of the body or clothing inside the feed hopper, discharge chute, or other rotating parts.
5. Be aware of the hot exhaust, when the machine is in operation touching the exhaust can cause burns.
6. Keep a proper balance and footing at all times. Do not over reach. Never stand at a higher level than the base of the machine when feeding material into it.
7. The operator should be extremely careful that pieces of metal, stone, glass or other foreign objects are not put into the intake openings of the chipper.
8. Please check if there is an abnormal noise or shaking of the machine. If so, turn off engine immediately and solve the problem. Inspect for damage; check for and tighten any loose parts; have damaged parts replaced or repaired with parts having equivalent specifications.
9. Big branches must be fed comparatively slowly into the machine side chute.
10. Do not allow processed material to build up in the discharge zone; this may prevent proper discharge and can result in kickback of material through the feed intake opening and may cause the drum to stop and belt to overheat
11. If the machine becomes clogged, immediately turn off the engine before clearing the debris. Keep the engine clear of debris and other accumulations to prevent damage to engine or possible fire.
12. Never rest items on the cover of hopper in case they may fall into the machine.
13. Make sure the opening of the chipping tube is always covered while not at work in case children place their hands into the tube.

14. To move the machine, firmly hold the handles with both hands, step on the Axle on the rear wheel with one foot, lift the front of machine, pay attention to centre of gravity of machine, walk slowly forward, backward or turn around as required.
15. Before operating the machine, please check the direction of the wind to avoid working downwind of exhaust.
16. Keep all guards and deflectors in place and in good working condition.
17. The exhaust and engine become hot and can cause a burn. Do not touch.
18. Turn off machine before transporting the machine.
19. Do not tilt the machine while the engine is running.

IV. Maintenance and storage

1. When the machine needs servicing, inspection, or storage, or to replace a part, turn off the engine, make sure all the moving parts are completely stopped and allow the machine to cool before making any inspections, adjustment etc.
2. Store the machine where fuel vapours will not reach an open flame or spark. If the machine is stored for a long time, drain the fuel out of the machine. Make sure the machine is cool before storing.
3. When the cutting blades need servicing, remove them manually when the machine is stopped **and the spark plug removed from the engine for safety.**

V. Important additional safety instructions for machine with bagging attachment

Before attaching or removing the bag, the engine should be turned off.

Cover the discharge opening with a fabric bag and tighten the cord in the mouth of the bag. When the machine is working, all the chips are collected in the bag.

Empty bag when full.

VI. Wood Shredder operation

i. Branch chipping

1. Long branches etc are fed into the side chipping tube for chipping by the rotating blade.
2. Some side shoots and branches may have to be trimmed from the main stalk before chipping.
3. Short stubs of branches may be pushed through the chipper section with the next branch, **never** use your hand.
4. The last branch is pushed inside the tube using a tool like a wooden stick. **Never use your hand or a metal object.**
5. **Never** push the small branches by hand, use a wooden stick instead.
6. When feeding branches, be certain that thicker branches are pushed slower than thin ones. A technique and understanding of the feed rate will be acquired to successfully shred very quickly.

7. **Do not** allow any accumulation of processed material to build up under discharge of the shredder-chipper as this can result in clogging. Use wood tools to clear the build up.
8. **Do not** put your face close to the feed hopper. This may result in injury.
9. **Do not** stand in front of discharge opening and never attempt to open the outlet of discharge while machine is on operation.
10. Put back the cover on the side feed tube once you have finished chipping.

ii. Leaves

Leaves and short stalk plants, cobs, and similar material should be Fed into the hopper and chipped in interlaced chipping bundles.

2. Do not remove the plastic cover when adding more material.
3. If the leaves and similar material proves difficult to enter the hopper, use a wooden stick to push them in, **NO NOT use your hands, or anything metal.**
4. Keep your face and body away from the feed hopper to avoid being struck by any material that may bounce back.
5. The discharge area is easily clogged if the material is moist or wet. Always stop the engine before clearing build-up with wood tools. **Never** use your hand or feet.
6. **Never** attempt to clear an accumulation of processed material when engine is still running.
7. For the processing of Organic Garden Mulch complete the following:
Put the discharge towards a wall, large board or other obstruction. Open the discharge door and remove the screen to allow the processed material pile up. With a garden spade feed this material into the shredder until it reaches the consistency you want.

Keep pets and bystanders away from the discharge area while the machine is running.

VII. Sharpening the blade

The cutting blade is made of special material and the blade is very sharp after being heat treated. It will become dull or blunt after being used for some time.

Tell tale signs of a dull blade: when the chipping sound becomes very ponderous and the belt always slips when it is not loose, or feeding speed gets slow, please remove the blade and check if it is blunt.

1. Turn off the engine and remove spark plug before removing the blade.
 - **Remove the Inspection Plate on the side of the chamber covering the blade.**

- Open the small outlet of the discharge.
- Remove the discharge screen.

2. Wearing safety gloves turn the blade flywheel so the blade is visible through the side chamber.

3. Remove the 3 Allen machine screws on the blade by using a Allen key in the front and rotating the lock nut on the back with a ring spanner.

4. Sharpen the blade.

- If the blade is damaged by metal or stone or other hard objects please sharpen the damaged area.
- Avoid changing the blade colour and anneal when sharpening the blade.
- **It may result in a break on the edge of the blade**
- Cutting angle should be kept within 45-40 degrees.
- The two blades should retain the same weight. Vibration will occur if they differ.

5. Position the blade on the flywheel and tighten the nuts.

6. Replace the inspection Plate covering the blade.

7. Replace the discharge screen.

8. Adjust the outlet of the discharge chute.

IX. Adjusting the belt. - Always Wear Gloves

There is a “V” belt under the belt guard. The belt will become loose and slip after using for some time. So re-tension adjustment is required.

1. Turn off the engine, remove spark plug and remove the belt cover.

2. Loosen the four location nuts on the engine.

3. Move engine forward until the “V” belt is tight.

4. Align the main pulley and affiliated pulley so that they are on the same plane. (A ruler can be used to measure for correct distance). Tighten the four location bolts on the engine base.

5. Re fix the belt cover back in its correct position and tighten nuts.

X. Replacing the belt - Always wear Gloves

The “V” belt needs to be replaced if it is has stretched or been damaged.

1. Turn off the engine, remove spark plug and remove the belt cover.

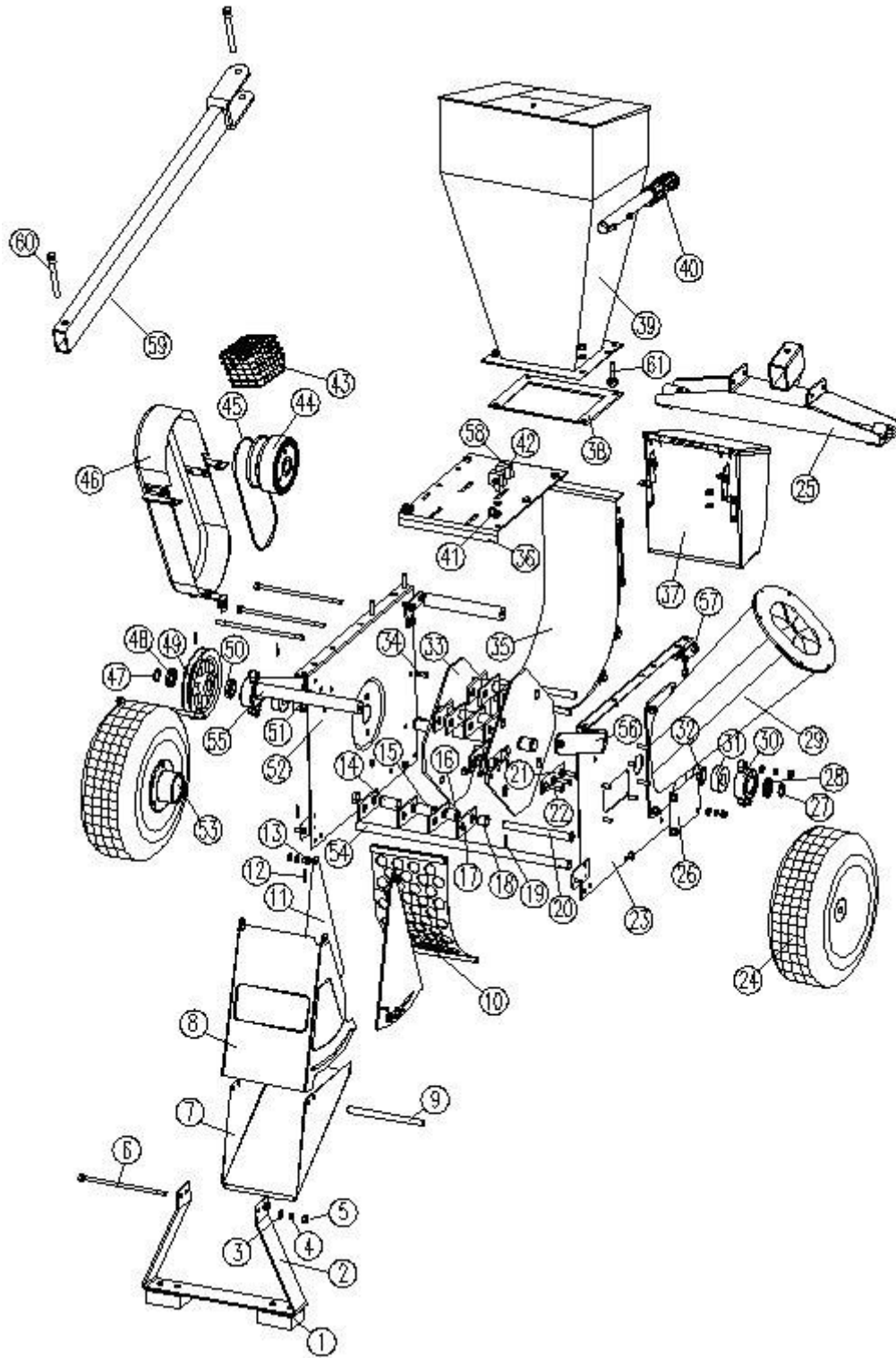
2. Loosen the 4 bed bolts on the engine slightly (Do not completely

- undo as this will let a baffle fall down inside the drum)
3. Remove the old belt. Pull the belt off using tools and turn the pulley gradually to remove the belt from the pulley.
Note: Take care not to trap fingers in belt/pulley.
 4. Place the new belt on the main pulley first (“V” belt on engine) and then ease onto the lower pulley on the blade flywheel.
 5. The new belt will be tighter than the old one. To assemble the new one is not as easily as removing the old one. When you hold the belt into the slot of the pulley wheel, do not put your finger between the pulley and belt, which may result in injury.
 6. Follow step 4 (Adjusting the belt) to align correctly
 7. Replace the belt cover.

Specification of shredder chipper

ITEM:	Shredder chipper	TITAN 13HP/14HP
ENGINE:	Type of engine:	Titan
	Carburettor type:	Single cylinder,4 stroke
	Displacement:	389cc
	Max. engine speed:	3600r/min
	Rated input power:	7.7kw/3600r/min
	Max. engine power:	8.5kw/3600r/min
	Starting mode:	Recoil starter
	Fuel tank capacity:	6.5L
	Lubricating oil sump capacity:	1.4L
	RATE:	1.74:1
Belt:	V-belt	

Blade:	1 piece	
Chipping capacity:	Diameter: 10 MM	
Max chipping speed:	26m ³ /h	
N.W:	103kg	
Carton:	860*735*1310(mm)	



Parts reference

No	Description	Qty	No	Description	Qty
1	rubber foot	2	32	spacer(right)	1
2	leg	1	33	impeller	1
3	flat washer	many	34	key	1
4	hex nut	many	35	rear board	1
5	lock washer	many	36	engine seat	1
6	hex bolt	1	37	tool box	1
7	discharge chute	1	38	rubber gasket	1
8	movable door	1	39	hopper	1
9	tube	3	40	handles	1
10	screen	1	41	hook	2
11	side door plate	2	42	hex bolt	many
12	hitch pin	2	43	burn-proof net	1
13	door axle	2	44	clutch	1
14	spacer I	4	45	V-belt	1
15	spacer II	8	46	pulley cover	1
16	spacer III	4	47	Belt cover bracket	1
17	hammer	16	48	spacer	1
18	spacer VI	4	49	pulley	1
19	roll pin	4	50	special washer(left)	1
20	hammer axle	4	51	washer (right)	1
21	blade	2	52	box frame side	1
22	flat HD SCR	6	53	wheel tube	2
23	box frame side left	1	54	wheel axel	1
24	wheel	2	55	front handle	2
25	wheel support	1	56	handle part	2
26	blade cover plate	1	57	box holder	2
27	wire cir clip 1	1	58	adjusting block	2
28	Washer (right)	1	59	hitch trailer	1
29	chipping chute	1	60	hitch pin	2
30	bearing seat	2	61	adjusting bolt	2
31	ball bearing	2	62		

Titan Pro Ltd

Easy Start up Guide

Important pre-starting note

Before starting it is essential that you make sure the Top hopper & Side chipping chute is clear of all produce, make sure the drum rotates freely without obstruction

1. Check Oil is filled right up to top of threads on filler hole, engine will not start if the oil is not at this level as there is a low oil level cut out in the sump.



2. Fill up fuel in petrol tank, do not overfill, avoid spillage onto engine.



3. Adjust throttle lever to Mid Position.



4. Adjust Choke to far left Position.



5. Turn the switch to the ON position



6. Using the Pull Start, pull the pull cord strongly to its full extent./



Electric start- turn key to start position.

7. Once started turn choke to Right-hand side (OFF) position to allow engine to run smoothly.



8. To Stop Engine turn switch to OFF position.

Important User Information

After each use ensure that the cutting chamber and the top and side chutes are completely clear of produce, continue to run the chipper until **ALL produce is expelled from the machine.**

Failure to do this may cause the safety drive belt mechanism to jam resulting in a belt failure which is **NOT covered under Warranty**



All photographs are the copyright of Titan Pro Ltd and all graphic design on this Manual are the copyright of Titan Pro Ltd. The copyright in all content included in this manual such as photographs, illustrations, text, is owned by either us or our content providers. No reproduction of anything in this manual is licensed without the written consent of Titan Pro, as protected by "The copyright Designs and Patents act 1988"