



## Titan TP 1000 Petrol Tiller Assembly Instructions

1. Open & fold down cardboard case carefully to expose metal angle framework

1



1.1



2. Take top frame off and remove zip ties therefore exposing the metal cage

2.



2.1



3. Remove all loose parts and place to one side on a clean dry surface.

3.



3.1



3.2



3.3



3.4



3.5



3.6

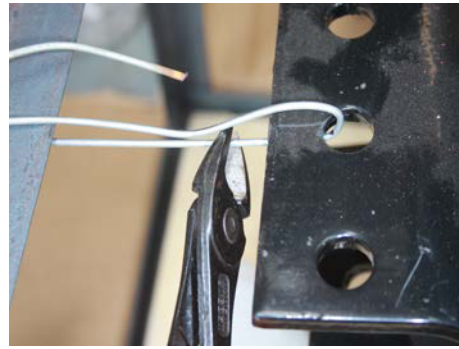


4. Remove 2 x bolts retaining drive shafts to frame using 13 & 14mm spanner (should only be finger tight) also cut the wires ties to end support

4.



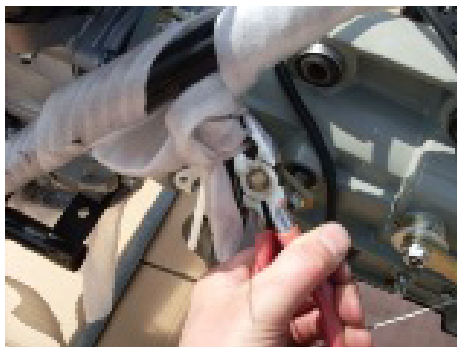
4.1



5. Cut the tie wrap that's holding the handlebars to the clutch lever from gearbox.  
& place 2 x transport wheels + 2 x Clevis pins & clips either side of the machine within easy reach.

5.1 .1 Lift machine out of frame and rest it on the ground, **(Two people required for this operation until transport wheels are installed)**

5



5



5



5.1



6. Tilt one side of the machine up at a time and slide wheel onto axel lining up the hole in the drive shaft with the wheel spigot, insert clevis pin and retaining clip, repeat for both wheels.

6



6



7. Locate handlebar frame and remove 2 x retaining bolts, these should only be hand tight, position the frame over the gearbox and insert bolts through frame and rubber mountings on the same side as oil filler cap. (As shown) apply loctite thread seal (not supplied) attach nuts tighten up fully so there is no movement. 14 +16mm spanners required.

7



7.1



8. Remove protective wrapping from boss on handlebars & slide adjustable rotating collar onto bolt as shown.

8.



8.





**8.1 Install handlebars – 8.2 (noting position of R/Hand cable to run on the underside of frame)**

8.1



8.2



9. Layout mudguards as shown & bolt together using 3 x M6 bolts (use loctite on all nuts not supplied) Outer guard goes on top of inner 8mm spanner required.

9.



9.1

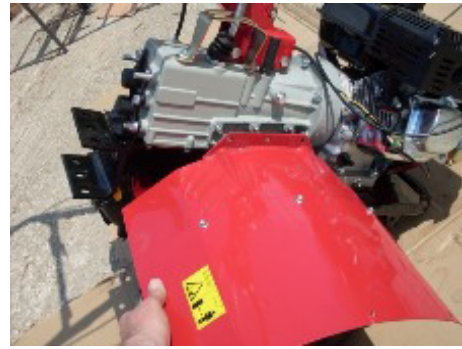


10. Bolt R/Hand & L/Hand mudguards on to machine using a 13MM spanner, (use loctite on all nuts not supplied)

10.



10.1



10.2



10.3



10.4



10.5



10.6



11. Install the gear change lever, 1. first remove the rubber end cap then 2, insert through rubber grommet on supporting bracket .3 replace the rubber end cap and connect other end to gear change lever using clevis pin & spring clip.

11



11.1



11.2



11.3



11.4



11.5



11.6



11.7



12. The reverse operation lever cable is already attached, see photo below, please attach the clutch lever cable as shown and adjust as required.

12

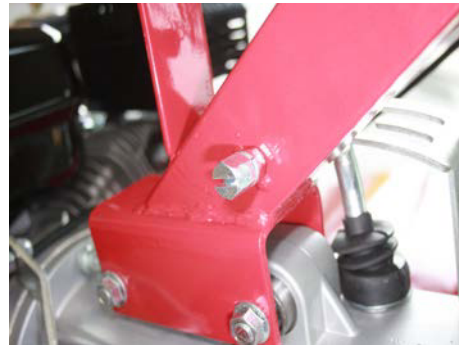


13. Screw the adjuster right in on clutch lever so this can be adjusted after the cable is connected to the control arm on the gearbox. Put cable through support pin, pull clutch up towards handlebars, slip cable into hole on pin. Adjust this so you can put the machine in gear and push it along without any drag from the gearbox while the clutch lever is pulled in.

13



13.1



13.2



13.3





14. Place tiller on level ground with the engine in a horizontal position. Fill gearbox with oil **SAE 15-40** by removing black filler plug with red top, remove small oil level screw on the Left-hand rear side of the gearbox as shown in photo 12.1. Pour the oil in the filler plug hole and fill until the oil starts to flow out of oil screw level hole. Re insert both oil level screw and the filler plug on top.

1.5 Litres in gear box.  
0.75 litres in engine.



14



14.1



14.2



14.3

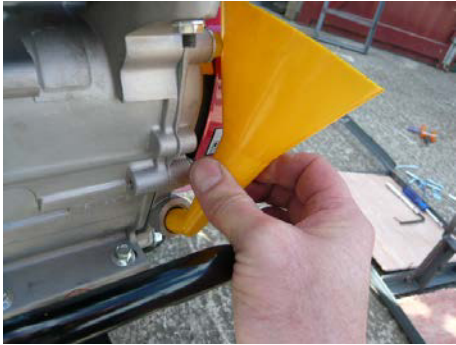


14.4



14.5

15. Fill the Engine with oil up to the top of the threads in the filler hole using a small funnel. Use 15–40 sae



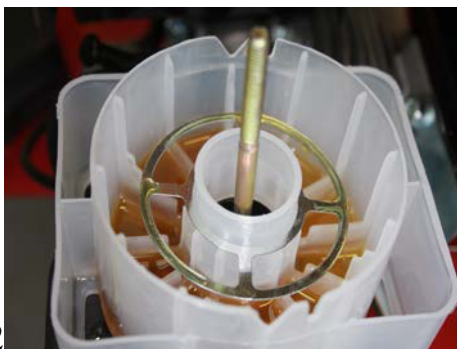
16. Put some oil in the Air filter oil bath use 15 -40 sae oil up to the **mark** shown on clear outer cover  
**Be careful not to overfill.**



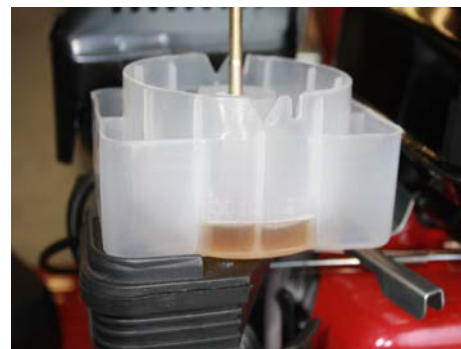
16



16.1



16.2



16.3

16.4



17. Assembly of the Tines, Please note the tines are Left and right handed, all cutting edges must face forward, they should be assembled as the photographs below (the one shown is for the right hand side of the machine.)

17



17.1



17.2



17.3



Note the inner bolts face away from the drive shaft housing so as not to foul it when moving. (loctite id to be used on all bolts, not supplied).

**17.1** Picture below shows the left hand set, note again the inner bolts closest to the machine are facing away from the drive shaft housing.

17.4



Picture shows tines with end protection discs attached with 2 and 3 sets of tines on shaft. To attach tines to machine revert to paragraph one of these assembly instructions.



18. Fit rear depth gage. Please see pictures below.

18



18.1





Your machine is now assembled



Follow all the adjustment and running and setting procedures in the handbook supplied.

**Please note this machine has a four stroke engine and uses clean unleaded fuel.**