



The Titan Pro 15HP Petrol Chipper/Shredder/Mulcher (TP15ESchip)



## Operator's Manual and Parts List

Spares and Support: 01258 489161

**Important:** Please read and understand everything contained in this manual before using this machine, paying particular attention to the safety instructions.

# Contents

Safety Instructions and Warning Labels:	3-4
Assembly:	5-9
Fuel and Oil:	10
Operation:	10-11
Maintenance and Storage:	11-13
Easy Start-Up Guide:	14-16
Specifications:	17
Parts Diagram & Parts List:	18-19
EC/UKCA Declaration of Conformity:	20

# Safety Instructions

Read and understand this owner's manual and the labels that are affixed to the chipper/shredder prior to use. You should learn all of the chippers' applications and limitations, as well as potential hazards. Please retain these instructions for future reference.



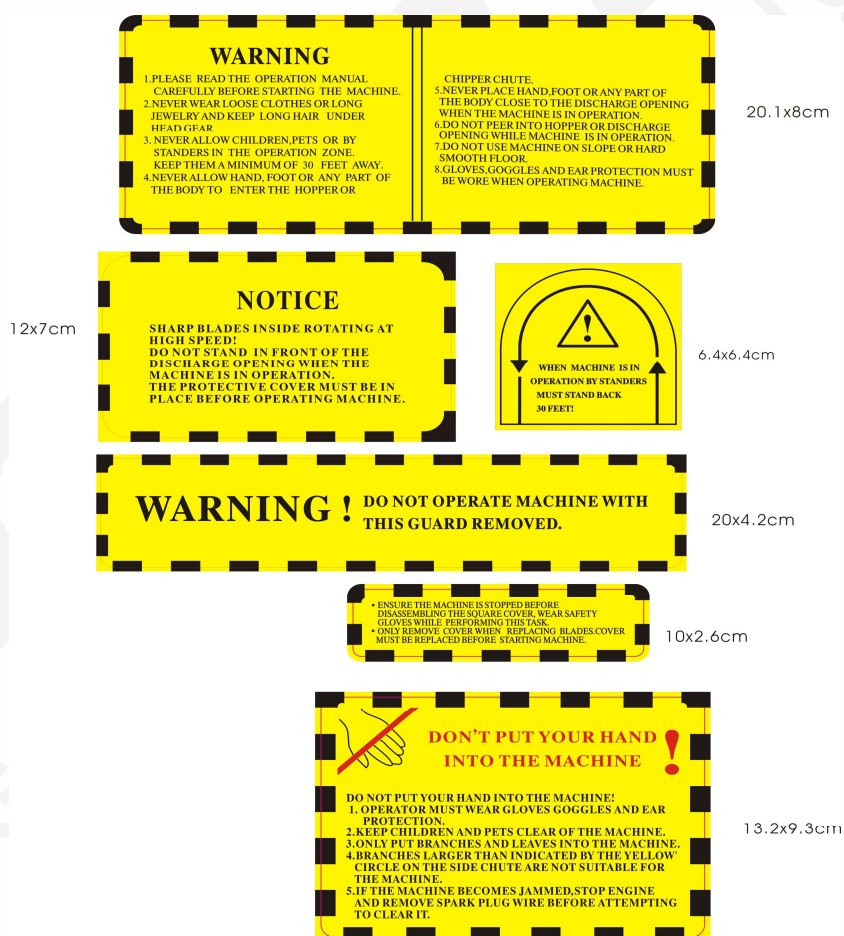
- Ensure you have the correct clothing and protection prior to use. This includes, but is not limited to, using sturdy footwear, ear protection, eye protection and heavy-duty gloves.
- Do **not** operate the machine if you are tired, ill, or under the influence of alcohol or drugs.
- Do **not** smoke when using the chipper/shredder, and always use caution when you are handling fuel. We recommend that you refuel the machine at least 3 meters away from where you wish to work in case any spilt fuel ignites when starting the engine. Always ensure the fuel cap is in tight and correctly fitted/secured before starting.
- Ensure bystanders, children or pets are at least 15 meters away when starting and/or operating the machine.
- Keep the operator's area clear of other objects.
- Examine the machine to ensure that it is in good condition prior to every use. Check that all screws, nuts and other fasteners are properly secured and that the screen is in place.
- If the fuel tank needs to be drained, this should always be done outdoors.
- Be aware of the hot exhaust - when the machine is in operation/after use, touching the exhaust can cause burns.
- Keep proper balance and proper, steady footing at all times. Never over reach. Never stand at a higher level than the base of the machine when feeding material into it.
- Keep your face and body away from the feed intake opening.
- Do **not** allow hands or any other parts of the body or clothing inside the feed hopper, side chute, discharge chute or any other rotating parts.
- Make sure your work area is clear and the machine is on level ground before starting the machine; do **not** operate in an enclosed area.

- Ensure that the plastic protection cover on the top hopper is intact and closed when the chipper/shredder is running to avoid any debris coming out.
- **NEVER** put your hands into the hopper or side chute to push material through. If necessary, use a wooden stick. **DO NOT** use a metal implement.
- **NEVER** attempt to move or clear any blockage in the machine whilst the engine is still running.
- Please recycle the cardboard packaging that the chipper was packed in.

### Important additional safety instructions for machine with bagging attachment

Before attaching or removing the bag, the engine should be turned off. Cover the discharge opening with a fabric bag and tighten the cord in the mouth of the bag. When the machine is working, all of the chips are collected in the bag. Empty the bag when full.

### WARNING LABELS





# Assembly

## Unpack and check contents

Remove all items from the box.

Some items are stored in the hopper for ease of transport.

Be sure to remove all loose parts from the hopper by removing the M8 flange bolts and lifting the hopper lid. [Ref: Photo 1 and 2]



**Photo 1**

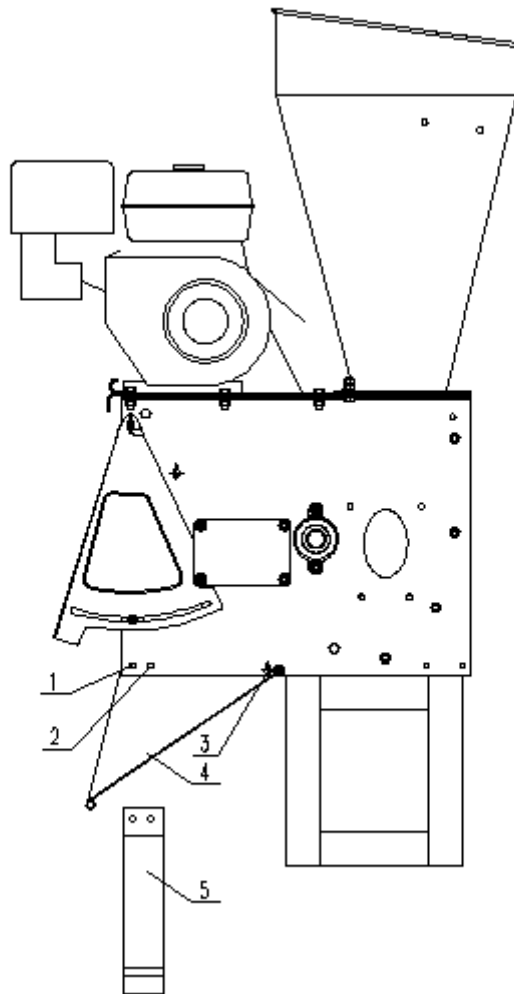
Make sure the hopper is empty before securing the lid on the hopper.



**Photo 2**

Assembly should be carried out on a clean, level surface by two people.

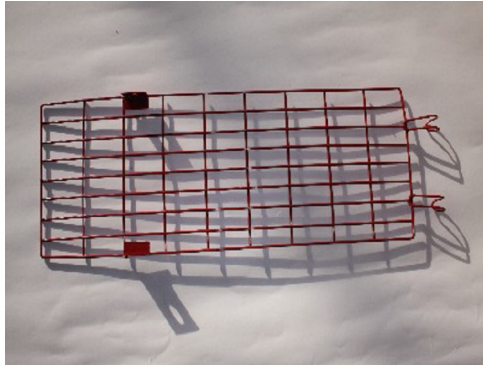
- Take out the basic machine from the box and place it on a level surface
- Attach the front foot to the basic machine [Ref: Figure 1]



**Figure 1**

- Remove the nuts from bolts 1 and 2.
- Remove the bolts and pipe spacer.
- Pull down the chute from the TRANSPORT position to the correct operational position.
- Attach front foot 5 to the side plate of the cutting chamber and align the mounting holes with holes 1 and 2.
- Put the pipe spacer that was removed in step 2 back in place. Insert the bolts and secure them tightly.
- Ensure that the lower discharge chute is facing towards the ground and is **BELOW** the pipe spacer as shown in the photographs in the section "Correct fitting position of the bottom discharge chute" on page 8.

## Fitting of Outer Discharge Safety Grill



Safety Grill

1) Fit the hooks over the top bar inside the chute.



2) Attach the side brackets to the bolts on the sides and tighten the bolts.



3) Place the support rod through the holes; slide the pipe spacer over and tighten the nuts.



Correct fitting of the bottom discharge chute

Please note that the outer grid is not yet installed in these photos



Incorrect fitting of the bottom discharge chute



Attach the axle bracket and wheels



**Picture 3**

- 1) Put the rear axle bracket in place and align the mounting holes.
- 2) Insert the M8\*20 bolts in the holes from outside to inside and secure them with washers and nuts.



### Attaching the chipper side chute to the cutting chamber



- 1) Remove the protective cover plate.
- 2) Put the chipper side chute in place on the side of the machine.
- 3) Align the three mounting holes in the flange.
- 4) Secure the flange with M8 washers and nuts.
- 5) Make sure the chipper side chute is in the correct position before tightening the nuts.

### Mounting the two handles



- 1) Secure the two hopper handles as shown in the image above.
- 2) Tighten the M6 nuts from the inside of hopper.
- 3) Bolt down the hopper lid when completed.

Check all nuts, bolts and screws and tighten them if loose

# Fuel and Oil

- Add unleaded fuel to the engine. We recommend E5 fuel is used.
- There is no oil in the new engine.
- Unscrew the black cover and pull the dipstick out. Use good quality engine oil, with a rating of 15w-40 or SAE30.
- Fill the engine oil to the top of the threads. There is a low oil cut out in the sump of this machine. **THE MACHINE WILL NOT START IF THE OIL IS LOW.**



- Refer to "Starting the Engine" for instructions regarding adding fuel.

## Operation

After each use, ensure that the cutting chamber, the top hopper and the side chute is completely clear. Run the machine until all produce is expelled from the machine.

**Failure to do this may cause premature belt failure, which is not covered under warranty.**

- Make sure the plastic cover on the upper hopper is closed when your shredder is running. Flying chips are very hazardous.
- Use a rough wooden stick to push material in to the feed hopper. Do not use your hands or metal tools.
- Big branches must be fed comparatively slowly into the machine side chute.
- Do not allow processed material to build up in the discharge zone. This may prevent proper discharge and can result in kickback of material through the feed intake opening, and may cause the drum to stop and the belt to overheat.

- If the machine becomes clogged, immediately turn off the engine before clearing the debris. Keep the engine clear of debris and other accumulations to prevent damage to the engine, or possible fire.
- Never rest items on the cover of the hopper as these may fall into the machine.
- To move the machine, firmly hold the handles with both hands, step on the axle on the rear wheel with one foot, lift the front of the machine, paying attention to the centre of gravity of the machine, and walk slowly forward, backward or turn around as required.
- Before operating the machine, check the direction of the wind to avoid working downwind of the exhaust.
- Keep all guards and deflectors in place and in good working condition.
- The exhaust and engine can quickly become hot and may cause burns. Do not touch.
- Turn the machine off before transporting it.
- Do not tilt the machine while the engine is running.

## Maintenance and Storage

- When the machine needs servicing, inspection, storage or to replace a part, turn off the engine, make sure all moving parts have completely stopped and allow the machine to cool before making any inspections, adjustments or other changes to the machine.
- Store the machine where fuel vapours will not reach an open flame or spark. If the machine is to be stored for a prolonged period, drain the fuel out of the machine. Make sure the machine is cool before storing.
- When the cutting blades need replacing, remove them manually when the machine is stopped and the spark plug is removed from the engine for safety.

## Branch Chipping

- Long branches must be fed into the side chipping chute for chipping by the rotating blade.
- Some side shoots and branches may have to be trimmed from the main stalk before chipping.
- Short stubs of branches may be pushed through the chipper section with the next branch - **never use your hand.**
- The last branch is pushed inside the tube using a tool such as a wooden stick. **Never use your hand or a metal object.**
- Never push small branches by hand - always use a wooden stick instead.



- When feeding branches, make sure that thicker branches are pushed slower than thin ones. A technique and understanding of the feed rate will be acquired to shred successfully very quickly.
- **Do not** allow any accumulation of processed material to build up under the discharge chute of the chipper as this can result in clogging. Use wooden tools to clear the build up.
- **Do not** put your face close to the feed hopper. This may result in injury.
- **Do not** stand in front of the discharge opening and never attempt to open the discharge outlet while the machine is in operation.

## Leaves

Leaves and short stalk plants, cobs, and similar material should be fed into the hopper and chipped in interlaced chipping bundles.

- Do not remove the plastic cover when adding more material.
- If it proves difficult to enter leaves and/or similar material into the hopper, use a wooden stick to push them in. **DO NOT use your hands, or anything metal.**
- Keep your face and body away from the feed hopper to avoid being struck by any material that may bounce back.
- The discharge area is easily clogged if the material is moist or wet. **Always stop the engine** before clearing the build-up with wooden tools. **Never** use your hands or feet.
- **Never** attempt to clear an accumulation of processed material when the engine is still running.
- Keep pets and bystanders away from the discharge area while the machine is running.

## Sharpening the blade

The cutting blade is made of special material and the blade is very sharp after being heat treated. It will become dull or blunt after being used for some time. Telltale signs of a dull blade: when the chipping sound becomes very ponderous; the belt slips when it is not loose, or the feeding speed slows. If you encounter any of these symptoms, please remove the blade and check if it is blunt. We also have a video showing how to do so on our website.

- **Turn off the engine and remove spark plug before removing the blade.**
- Remove the inspection plate on the side of the chamber, covering the blade.
- Open the small outlet of the discharge area.
- Remove the discharge screen.
- Wearing safety gloves, turn the blade flywheel so the blade is visible through the side chamber.

- Remove the 3 Allen machine screws on the blade by using a Allen key in the front, and rotating the lock nut on the back with a ring spanner
- Sharpen or replace the blade - replacement blades can be found on our website.
- If the blade is damaged by metal, stone or other hard objects, please sharpen the damaged area or replace the blade.
- Avoid changing the blade colour and anneal when sharpening the blade - this may result in a break on the edge of the blade.
- The cutting angle must be kept within 45-40 degrees.
- Position the blade on the flywheel and tighten the nuts.
- Replace the inspection plate covering the blade.
- Replace the discharge screen.
- Adjust the outlet of the discharge chute.

## Adjusting the belt - Always Wear Gloves

There is a "V" belt under the belt guard. The belt will become loose and slip after using for some time, so re-tensioning/adjustment will be required.

- **Turn off the engine, remove the spark plug and remove the belt cover.**
- Loosen the four location nuts on the engine.
- Move the engine forward until the "V" belt is tight.
- Align the main pulley and affiliated pulley so that they are on the same plane. A ruler can be used to measure for correct distancing. Tighten the four location bolts on the engine base.
- Refit the belt cover/guard back into its correct position and tighten the nuts.

## Replacing the belt - Always Wear Gloves

The "V" belt needs to be replaced if it is has stretched or been damaged. We have a video showing how to replace the drive belt on our website.

- **Turn off the engine, remove the spark plug and remove the belt cover.**
- Loosen the four bed bolts on the engine slightly - do not completely undo these as this will let a baffle fall down inside the drum.
- Remove the old belt. Pull the belt off using tools and turn the pulley gradually to remove the belt from the pulley. Take care not to trap fingers in belt/pulley.
- Place the new belt on the main pulley first ("V" belt on engine) and then ease onto the lower pulley on the blade flywheel.
- The new belt will be tighter than the old one. Fitting the new belt is not as easy as removing the old one. When you hold the belt into the slot of the pulley wheel, never put your finger between the pulley and belt, as this may result in injury.
- Follow the instructions under "Adjusting the belt" to align correctly
- Replace the belt cover.

# Easy Start-Up Guide

## Important pre-starting note

Before starting the machine, it is essential that you make sure the top hopper and side chipping chute are clear of all produce, and that the drum rotates freely without obstruction.



Check the the engine oil is filled right to the top of the threads on the filler hole. The engine will not start if the oil is not at the correct level as there is a low oil level cut-out in the sump.



Fill the petrol tank with unleaded petrol. Do not overfill. Avoid spillage onto the engine.



Adjust the throttle lever to the mid position.



Adjust the choke to the far-left position.



Turn the on/off switch to the ON position.



Using the recoil starter, pull the pull cord strongly to its full extent.



Once started, turn the choke to the right-hand side (OFF) position to allow the engine to run smoothly.

To stop the engine, turn the on/off switch to the OFF position.



# Important User Information

## **NEVER PUT YOUR HANDS INTO THE MACHINE.**

Ensure that the machine is **always run on full revs when chipping/shredding.**

Running the machine on full revs is the only way to achieve optimal performance. If this is lowered, the machine will not chip as effectively as it otherwise could.

**After each use ensure that the cutting chamber/drum, the top hopper and side chute are all completely clear of produce. Continue to run the chipper until **ALL** produce is expelled from the machine.**

**Before starting the machine again, make sure nothing has fallen into the chipping chute that would block the machine.**

**Any blockages caused by unchipped debris remaining inside the machine can cause issues when starting your machine.** It may cause a blockage, impacting the effectiveness of the machine in operation, or stop the machine from being able to turn freely. If the machine cannot turn freely, attempting to start the machine can cause damage included, but not limited to, burning the belt.

**Failure to carry out these checks/follow these instructions may cause the safety drive belt mechanism to jam, resulting in a belt failure which is NOT covered under warranty.**

If you have any further questions on the operation of your chipper, please feel free to email our customer services department at [customerservices@titan-pro.co.uk](mailto:customerservices@titan-pro.co.uk)

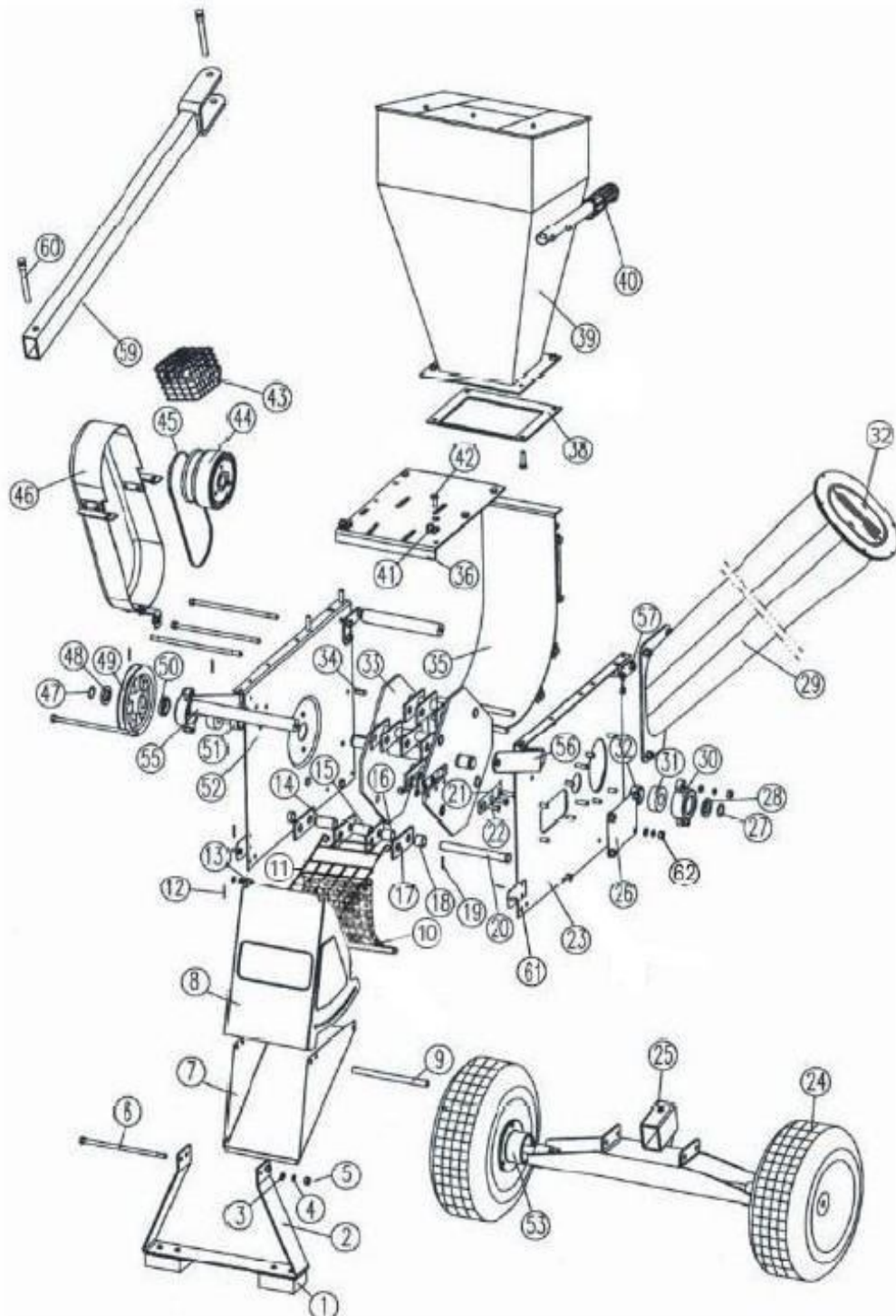
# Specifications

Model:	TP15ESchip
Engine:	Titan Pro 4-Stroke Single Cylinder
Maximum Horsepower:	15HP
Displacement:	420cc
Bore x Stroke:	90mm x 66mm
Engine Speed:	3600rpm
Starting Mode:	Recoil Starter and Electric Key Start
Fuel Tank Capacity:	6.5L
Fuel Type:	Unleaded Petrol
Lubricating Oil Tank Capacity:	1.4L
Output Shaft Diameter:	25mm
Top Hopper Chipping Capacity:	10mm Diameter
Side Chute Chipping Capacity:	50mm-75mm Diameter
Maximum Chipping Speed:	26m <sup>3</sup> /h
Blade:	1 x Single-Sided Blade
Flail Hammers:	16 x Flails (Total - 4 Rows x 4 Flails)
Net Weight:	103kg
Carton Size:	1310mm x 860mm x 735mm
Assembled Size:	1370mm (H) x 840mm (W) x 940mm (L)



**All photographs are the copyright of Titan Pro Ltd and all graphic design in this manual are the copyright of Titan Pro Ltd. The copyright in all content included in this manual such as photographs, illustrations and text, is owned by either us or our content providers. No reproduction of anything in this manual is licensed without the written consent of Titan Pro, as protected by "The Copyright Designs and Patents Act 1988".**

# Parts Diagram





# Parts List

No.	Description	Qty	No.	Description	Qty
1	Rubber Foot	2	32	Plate	1
2	Front Support	1	33	Blade Flywheel	1
3	Flat Washer	Many	34	Key	1
4	Hex Nut	Many	35	Rear Board	1
5	Lock Washer	Many	36	Engine Seat	1
6	Hex Bolt	1	37		
7	Discharge Chute	1	38	Rubber Gasket	1
8	Movable Door	1	39	Hopper	1
9	Tube	3	40	Handle Grip	2
10	Screen	1	41	Hook	2
11	Safety Grid	1	42	Hex Bolt	Many
12	Hitch Pin	2	43	Engine Exhaust Guard	1
13	Door axle	2	44	Centrifugal Clutch	1
14	Spacer I	4	45	"V" Belt	1
15	Spacer II	8	46	Belt Cover	1
16	Spacer III	4	47	Belt Cover Bracket	1
17	Flail Hammers	16	48	Spacer	1
18	Spacer VI	4	49	Pulley	1
19	Roll Pin	4	50	Spacer	1
20	Hammer Axis	4	51	Spacer	1
21	Blade	1	52	Chamber R/H Side Frame	1
22	Blade Screw	3	53	Wheel Housing	2
23	Chamber L/H Side Frame	1	54		
24	Wheel	2	55	Front Handle	2
25	Wheel Support	1	56	Front Handle Support	1
26	Blade Cover Plate	1	57	Rear Handle	4
27	Circlip	1	58		
28	Washer (Right)	1	59	Towing Bar	1
29	Side Chipping Chute	1	60	Bolt	1
30	Bearing Housing	2			
31	Bearing	2			



**UK  
CA**

## **EC & UKCA DECLARATION OF CONFORMITY**

**We Titan Pro Ltd - DT11 7FP (Importer) declare that the product:**

**Designation:** Titan Pro 15HP Petrol Chipper/Shredder/Mulcher

**Model(s):** TP15ESchip

**Type/Serial No.:** As per rating label on machine

**Complies with the following machinery directives:**

2006/42/EC - Machinery Directive

2004/108/EC - Electromagnetic Compatibility Directive

2005/88/EC - Noise Emission in the Environment by Equipment for Use Outdoors  
Directive

**The conformity assessment procedure followed was in accordance with:**

Annex V of the Directive 2000/14/EC

Measured Sound Pressure Level: 108.4db(A)

Guaranteed Sound Power Level: 110db(A)

**Standards and Technical Specifications Referred to:**

EN13683:2003+A2:2011

**Authorised Signatory & Technical File Holder**

**Date:**

30/09/2012

**Signature:**

**Name:** Mr. Charles Abbott

**Position:** Director

**Company:** Titan Pro Ltd

**Address:**

**Unit 11 Glenmore Business Park, Wend-AI Road, Blandford Forum, Dorset, DT11 7FP**