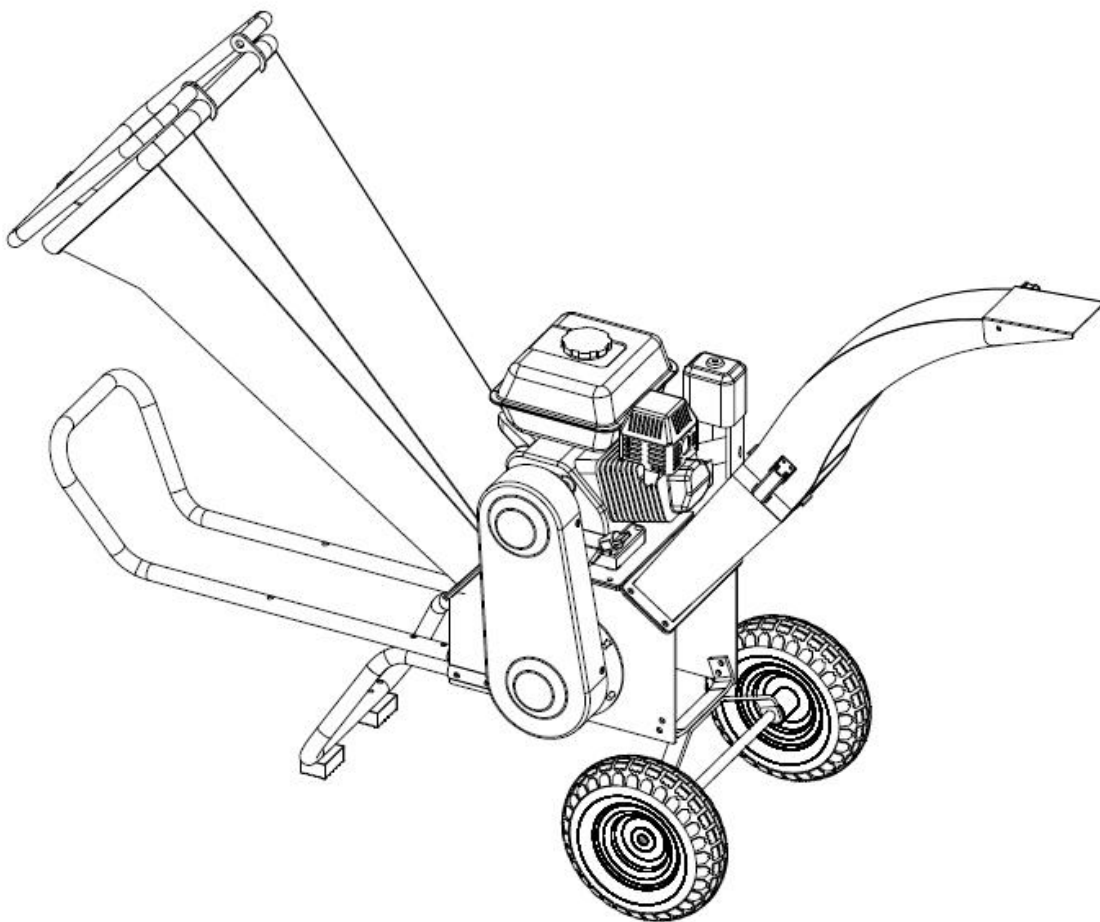




TP600B Chipper - User Manual



Read through this owner's manual carefully before using this product, to ensure the safety of yourself and others. Pay attention to all safety information, warnings and cautions contained within this manual.







Contents

Page Contents	Page #
Safety Instructions	3
Safety Labeling and Significance	4
Specifications	5
Working Process	6
Operating Instructions and Warnings	6
Maintenance Instructions	6
Transport and Storage	7
Assembly	8
Troubleshooting	12

Safety Instructions

- The machine must not be used in any other way than that described in the manual.
- Use only original equipment and spare parts. If you use non-approved spare parts, there is increased risk and this is, therefore, not permissible. All liability is renounced in the event of an accident or other damage caused by the use of non-approved parts.
- Before using the machine for the first time, the dealer or other experienced mechanic must instruct in its use.
- When the machine is in operation, you are responsible for any third party in the area. Never use the machine in the presence of others. Never allow children or animals into the working area of this machine.
- Do not allow minors to operate this machine.
- Always keep the safety and operational instructions with the machine.
- Do not add or remove parts which were already fitted to the machine in the factory prior to any required assembly you must undertake, e.g., removing the belt guard.
- Check all the safety parts are in their proper positions and remember to tighten all nuts and bolts before starting the machine.
- Only use this machine on a level, flat working area. Use only outdoors, in a well-ventilated area. Keep this machine away from flammable and explosive objects and liquids.
- When working with this machine, wear close-fitting work clothes, sturdy work gloves, eye protectors, earmuffs, a dustproof mask, and antiskid shoes.
- Before and after using the machine, proper maintenance is necessary in order to keep the machine running at its optimal levels and achieve the maximum life of this machine.
- Before using the machine, carefully read the carefully the instructions and ensure that you understand the instructions contained within. Failure to comply with these instructions could result in injury and/or damage to the machine, property, or the surrounding area.

Safety Labeling and Significance

	Read all instructions carefully before operating this machine.
	DANGER - pay attention for your own safety.
	Keep hands away from moving/rolling parts.
	Beware of sharp edges/cutting fingers.
	Keep a safe distance from the working area of the machine.
	Beware of objects discharged/thrown out of the machine.

Specifications

Model	TP600B
Maximum Chipping Capacity	60mm
Maximum Blade Speed	2880 r/min
Engine Type	OHV 4-Stroke 168F
Displacement	196cc
Maximum Output	6.5HP/3600rpm
Fuel Volume	3.6L
Oil Volume	0.6L (10W-30)
Starting System	Recoil Start
Fuel Type	Unleaded Gasoline
Efficacy	500-2000 KG/h
Principal Axis Rotation Direction	Anticlockwise
Carton Size	1700mm x 540mm x 1110mm
Accessories	Users manual and toolkit

Working Process

This machine utilises both a hopper and a discharge chute. Material is drawn into the hopper when in operation. After cutting, materials are discharged through the discharge port.

Operating Instructions and Warnings

Please ensure you have carefully read and understood the engine manual before using this machine. The engine is shipped from the factory without fuel and lubricants. The TP600B has oil capacity of 0.6L; the oil should be replaced every 50 hours. Check the machine before use. Take protective measures before starting the machine. Check blades to ensure the correct gap of 1-2mm.

- Keep in mind the safety of others around you when operating this machine. Do not allow children or animals into the working area of your machine.
- Do not operate this machine under the influence of drugs or alcohol of any description.
- Never put your hands or any other body parts into hopper.
- Do not stand in the working area of the discharge chute. Chippings are discharged from this chute and can cause injury if they come into contact with a person.
- If the machine makes unusual noises or vibrates abnormally, immediately turn the machine off and check it.

Maintenance Instructions

Re-grease the main shaft bearing after every 50 hours of use.

Check all the parts regularly (at least twice monthly), paying particular attention to the bearing, blades and belt.

As soon as the chipping performance of your machine begins to deteriorate, you should replace the blades. You should check the condition of your blades regularly. Blunt blades will lower working efficiency and can cause damage to the machine.

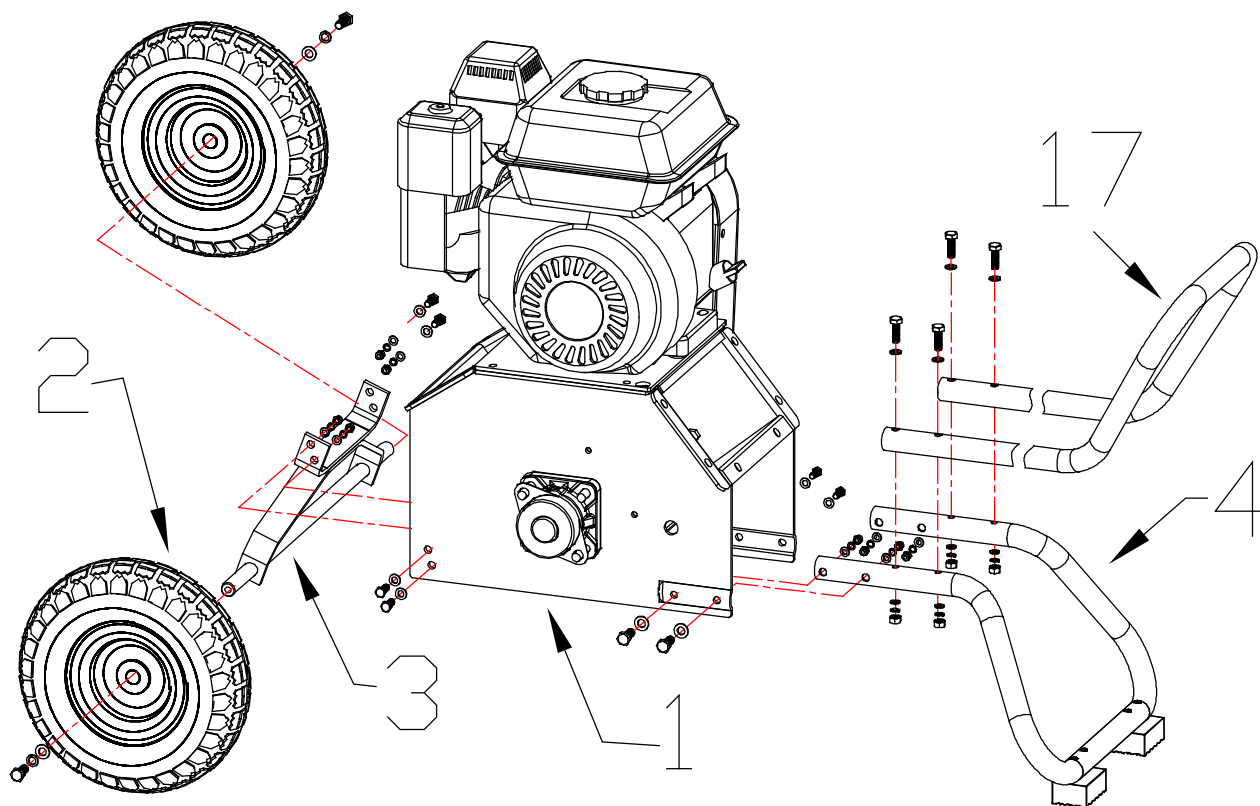
You should carry out engine maintenance in accordance with the engine manual.

Transport and Storage

Ensure that the engine is turned off before moving the machine. Turn off the fuel controls in order to prevent overflowing fuel. If you need to store the machine for a long time (such as at the end of the season), please note the following points:

- Drain the fuel from the machine into a suitable fuel tank. Do not re-use fuel.
- Ensure that your storage location is clear and well-ventilated.
- Ensure you follow the maintenance instructions.

Machine Assembly



Part Number	1	2	3	4	17
Part Name	Chamber	Wheel	Axle Stand	Cage	Handrail

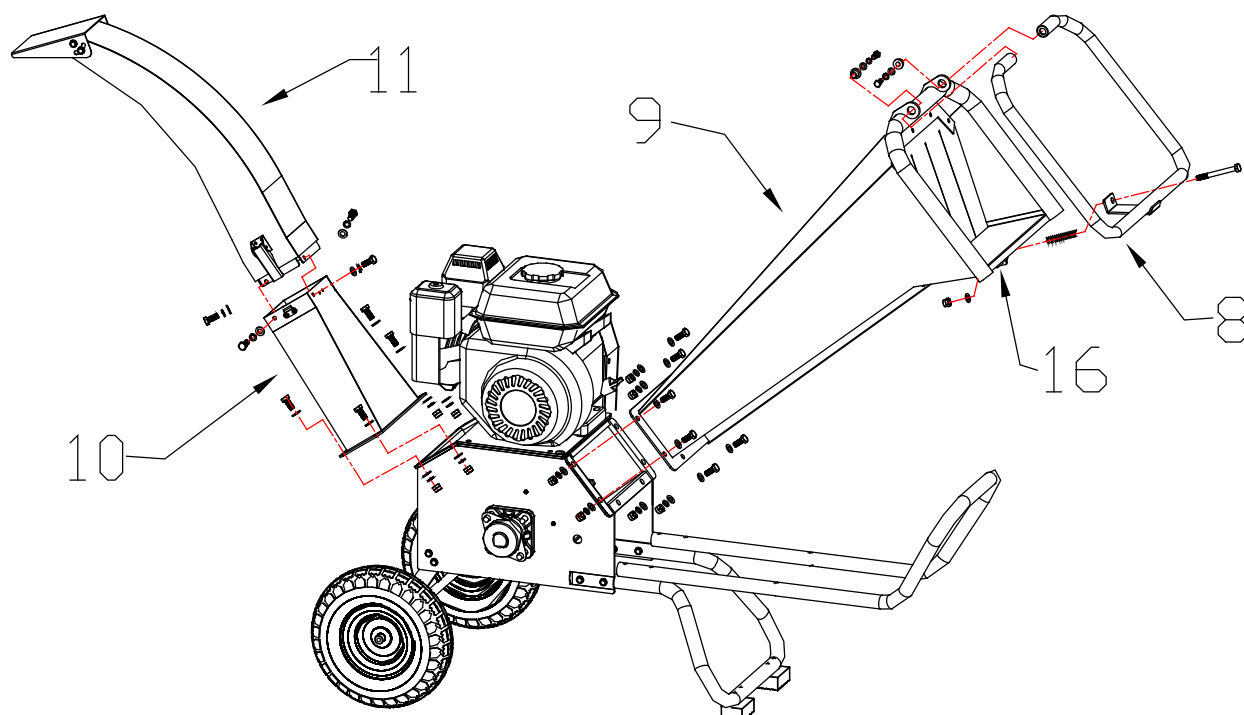
Assembly instructions

Warning – while completing the assembly of your machine, do not place your hands or any other body parts within the radius of the rotary cutting wheel. Do not touch the blades with your hands or any other body parts. Please do not try to complete the assembly by oneself – due to the weight, lifting of the machine requires two people.

1. Lay the chamber (1) on an elongated support or platform which is approx. 30cm high from the ground, leaving some space at the signs of the chamber for the installation of the wheels (2) and the cage (4) as shown in the above image.

2. Affix wheel (2) to the axle stand (3) using suitable fasteners.
3. Affix the axle stand (3) to the chamber (1).
4. Install the cage (4) to the to the corresponding position on the chamber (1)
5. Connect and fix the cage (4) and joint pipe (5)
6. Mount the handrail (17) on the connecting point on the cage (4).
7. After these steps are completed, the elongated support or platform can be removed in order to move onto the next phase.

Hopper and Discharge Chute Assembly



Part Number	8	9	10	11	16
Part Name	Safety Cut Out	Hopper	Lower Discharge Chute	Upper Discharge Chute	Safety Switch

Assembly instructions

Warning – while completing the assembly of your machine, do not place your hands or any other body parts within the radius of the rotary cutting wheel. Do not touch the blades with your hands or any other body parts. Please do not try to complete the assembly by oneself – due to the weight, lifting of the machine requires two people.

1. Attach the safety cut out (8) with bolts and shaft sleeve into the corresponding position on the hopper (9).
2. Pass the long bolt through the hole on the welded sheet iron which is at the bottom of the safety cut out (8). Set the long bolt through the

- compression spring and fix them into the corresponding hole on the hopper (9) with the nut provided. Adjust the spring to a suitable height.
3. Attach the hopper (9) to the chamber (1) with the bolts provided. Due to the weight of the hopper (9), we advise using a lifting device or 3+ people to lift and attach this item.
 4. Attach the lower discharge chute (10) to the upper discharge chute (11) using the bolts and adjustable buckles.
 5. Attach the complete discharge chute (10 and 11) to the chamber (1).

Troubleshooting

Fault		Solution
1	The engine cannot be started.	Read the engine user manual. Check the fuel ON/OFF – make sure this is ON. Check the fuel and oil levels. Check the emergency stop button.
2	Engine cuts out whilst working.	Check if the engine has stopped due to overloading. Check if something has blocked inside the chipping hopper. Check the emergency stop button and protection switch.
3	The hopper is blocked.	Stop the machine, remove the hoppers and clear the blocked material. Do not touch the blade during this process.
4	The machine is making unusual noises.	Immediately turn the machine off. Check if the fastener has become loose. If this is not the case, seek professional assistance to see if a repair is necessary.
5	The blade is damaged.	Go to the professional repair point to change or repair the blades.
6	The belt becomes loose/damaged.	Remove the belt cover and change the belt.
7	The quality of chipping has decreased.	Adjust the blade space. The recommended space for rough chipping is 1.5mm-3mm. The recommended space for fine chipping is 0.1mm-1.2mm.