



# TP800ES Wood Chipper User Manual

---

## Safety and Operational Instructions



---

---

**Important: Please read all safety instructions before operating any equipment.**

## Table of Contents

PART I:	General Safety Rules	2
PART II:	Familiarising Yourself with the Wood Chipper	7
PART III:	Operating the Wood Chipper	8
PART IV:	Maintaining the Wood Chipper	11
PART V:	Troubleshooting and Parts List	13
	Declaration of Conformity	16

## Terms used in this manual

---

### **WARNING**

Warnings indicate a hazardous situation, which, if not avoided, could result in death or serious injury.

---

### **CAUTION**

Cautions indicate a hazardous situation, which, if not avoided, could result in minor or moderate injury.

---

### **NOTICE**

Notices indicate important information to ensure proper use of your machine. Failure to follow these instructions could result in damage to your machine or property.

---

## Additional Information and potential changes

We reserve the right to discontinue, change and/or improve products at any time without notice or obligation to the purchaser/customer. The descriptions and specifications contained in this manual were in effect at the time of printing. Equipment described within this manual may be optional. Some illustrations may not be applicable to your machine.

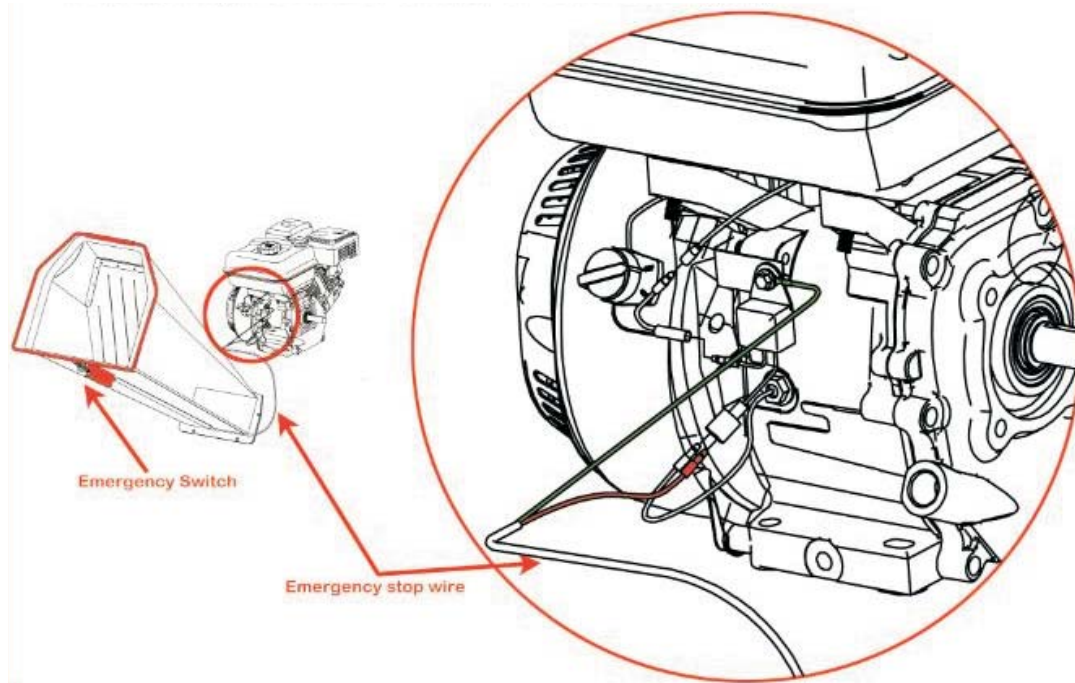
# Part I: General Safety Rules

## Safety Labels Found on Your Unit



## **⚠ WARNING: EMERGENCY STOP SWITCH**

**Make sure that the emergency stop wire is connected correctly prior to use. Failure to do so may result in serious injury or death.**



---

## **⚠ WARNING**

Ensure you read all contents of this instructional manual before using the wood chipper for the first time. Ensure you are familiar with all operational and servicing recommendations contained in the manual, to ensure the safest and best performance of your machine.

---

---

## **⚠ CAUTION**

This machine is designed solely for the purpose of chipping wood, and must not be used for any other purpose. It should only be used by trained operators who are familiar with the contents of this manual. It is potentially hazardous/dangerous to fit or use any parts other than those supplied by your dealer. The company holds no liability for the consequences of any such use, and any applicable warranty would become void.

---

## Before Using the Wood Chipper

---

### NOTICE

- A) Operators must be fully trained before using this machine.
  - B) The user manual must be read and fully understood before using this machine.
  - C) The machine must be positioned on level ground, with all guards fitted and in good condition.
  - D) Blades must be in good condition and secure. All blades must be replaced in sets.
  - E) All fasteners must be checked for tightness.
  - F) Only **wooden** materials, free of any nails, obstructions, etc. can be fed into the machine.
  - G) A fire extinguisher must be available on site at all times.
- 

## When Using the Wood Chipper

---

### NOTICE

- A) Always feed material into the machine standing from the side of the machine.
  - B) It is best to have a second trained operator within easy reach of the machine.
  - C) Users must maintain strict discipline at all times, and service the machine at specified periods.
  - D) Note the direction of the discharge chute, and if necessary, note the wind direction to prevent debris being blown into roads, or other areas where it could affect members of the public.
  - E) **DO NOT** put any part of your body into the in-feed chute/hopper while the machine is running.
  - F) **DO NOT** operate the machine whilst under the influence of drugs or alcohol.
  - G) **DO NOT** operate inside a building or confined space.
  - H) **DO NOT** climb on the in-feed chute/hopper.
- 

## Protecting Yourself and Those Around You

---

### WARNING

This is a high-powered machine, with moving parts which operate at a high speed. You must always operate the machine with caution, and abide by all safety guidelines. Unsafe operation can create a number of hazards for the user, and anyone else nearby. Always take the following precautions when using this machine:

- A) Keep in mind that the operator/user is responsible for accidents or hazards which occur to other people, property and/or themselves.
  - B) Always wear protective goggles or safety glasses with side shields whilst using the wood chipper to protect your eyes from possible thrown debris.
  - C) Avoid wearing loose clothing or jewellery, which can catch on moving parts.
  - D) We recommend wearing gloves whilst using the wood chipper. Be sure that your gloves fit properly and do not have loose cuffs or drawstrings.
  - E) Wear shoes with non-slip treads when using your wood chipper. Wearing safety shoes is recommended. Do not use the machine whilst barefoot, or wearing open sandals.
  - F) Wear trousers which cover all of the legs - do not wear shorts whilst operating the wood chipper.
  - G) Keep bystanders at least 50 feet away from your work area at all times. Stop the engine when another person or animal approaches.
-

## Safety for Children and Animals/Pets

---

### **WARNING**

Accidents can occur if the operator/user is not alert to the presence of children and/or pets/animals. Children can be curious about this machine and the chipping activity, so it is important to ensure they are kept away at all times. Never assume that children will remain where you last saw them.

Always follow these precautions:

- A) Keep children and pets at least 50 feet away from the working area, and ensure they are under the watchful care of a responsible adult.
  - B) Always stay alert and turn off the machine if children and/or pets/animals enter the work area.
  - C) Never allow children to operate the wood chipper.
- 

## Safety with Petrol Powered Machines

---

### **WARNING**

Petrol is a highly flammable liquid. Petrol also gives off flammable vapors which can be easily ignited and cause a fire or explosion. Never overlook the hazards of petrol. Always follow these precautions:

- A) Never run the engine in an enclosed area or without proper ventilation, as the exhaust from the engine lets off carbon monoxide, which is an odorless, tasteless, deadly poisonous gas.
  - B) Store all fuel and oil in containers specifically designed and approved for this purpose. Always keep these away from heat and open flame, and out of the reach of children.
  - C) Replace rubber fuel lines and grommets when worn or damaged, and after 5 years of use.
  - D) Fill the petrol tank outdoors with the engine off and allow the engine to cool completely. Do not handle gasoline if you or anyone nearby is smoking, or if you are near anything which could cause it to ignite or explode. Reinstall the petrol tank cap and petrol container cap securely.
  - E) If you spill petrol, do not attempt to start the engine. Move the machine away from the area of the spill and avoid creating any source of ignition until the gas vapors have dissipated. Wipe up any spilled fuel to prevent a fire hazard and properly dispose of the waste.
  - F) Allow the engine to cool completely before storing in any enclosure. Never store a machine that has fuel in the tank, or any fuel containers, near an open flame or spark such as a water heater, space heater, clothes dryer or furnace.
  - G) Never make adjustments or repairs while the engine is running. Shut down the engine, disconnect the spark plug wire and keep it away from the spark plug to prevent accidental starting. Wait 5 minutes before making adjustments or repairs.
  - H) Never tamper with the engine's governor setting. The governor controls the maximum safe operation speed and protects the engine. Over-speeding the engine is dangerous and will cause damage to the engine and to the other moving parts of the machine. If required, see your authorised dealer for engine governor adjustments.
  - I) Keep combustible substances away from the engine when it is hot.
  - J) Never cover the machine while the muffler/exhaust is still hot.
  - K) Do not operate the engine with the air cleaner or the carburetor air intake cover removed. Removal of such parts could create a fire hazard. Do not use flammable solutions to clean the air filter.
  - L) The muffler/exhaust and engine become very hot when in use - do not touch, as this can cause severe burns.
-

## General Safety

---

### **WARNING**

Operating this wood chipper safely is necessary to prevent or minimise the risk of death or serious injury. Unsafe operation can create a number of hazards to the user. Always take the following precautions when operating:

- A) Your wood chipper is a powerful tool, not a toy or plaything. Exercise extreme caution at all times. The machine is designed to chip wood. Do not use it for any other purpose.
  - B) Know how to stop the wood chipper quickly.
  - C) Never operate your unit on a slippery, wet, muddy or icy surface. Exercise caution to avoid slipping or falling.
  - D) See the manufacturer's instructions for proper operation and installation of accessories.
  - E) Never use the machine without ensuring that all guards and shields are in place.
  - F) Never, under any conditions, remove, bend, cut, fit, weld, or otherwise alter standard parts on the wood chipper. This includes all shields and guards. Modifications to your machine could cause personal injury and property damage, and will invalidate your warranty.
  - G) If the machine starts to make an unusual noise or vibration, shut down the engine, disconnect the spark plug wire (keeping it away from the spark plug to prevent accidental starting) and wait 5 minutes for the engine to cool down. Inspect the machine for damage. Vibration is generally a warning of trouble. Check damaged parts and clean, repair and/or replace as necessary.
  - H) Never tamper with safety devices. Check their proper operation regularly.
  - I) Before performing any maintenance or inspection procedures, shut down the engine, disconnect the spark plug wire (keeping it away from the spark plug to prevent accidental starting) and wait 5 minutes for the machine to cool down.
  - J) Never allow people who are unfamiliar with these instructions to use the wood chipper. Allow only responsible individuals who are familiar with these rules of safe operation to use your machine.
  - K) Never overload or attempt to chip wood beyond the manufacturer's recommendation. Doing so could result in personal injury or damage to the machine.
  - L) When using the machine, never rush or take things for granted. When in any doubt about the equipment or your surroundings, stop the machine and take time to look things over.
  - M) Never operate the machine when under the influence of alcohol, drugs or medication.
  - N) Use the machine only in daylight.
  - O) Stay alert for unexpected/hidden hazards and/or traffic.
  - P) Ensure all nuts and bolts are kept tight, and keep the equipment in good operating condition. It is important to ensure that the machine is properly maintained before and after use.
- 

### **Note for All Users**

Lists of warnings and cautions cannot be all-inclusive. If situations occur that are not covered by this manual, the operator must apply common sense and operate this wood chipper in a safe manner. Contact your supplier for assistance.

## Part II: Familiarising Yourself with the Wood Chipper

---

---

Before use, ensure you familiarise yourself with the controls and features of the wood chipper. If you have any questions in this regard, please contact your supplier.

### Technical Specifications

Starter Method:	Electric Start
Engine:	270cc Electric Start Four Stroke Petrol Titan Engine
Fuel Type:	Petrol
Chipper Capacity:	3m <sup>3</sup> /hour to 5m <sup>3</sup> /hour
Maximum Wood Diameter:	100mm
Permitted Wood Width:	150mm
Chipper Blade:	Twin Reversible Blades
Tyre:	4.10/3.5-4
Overall Height:	870mm
Overall Length:	555mm
Width:	850mm
Weight:	110/95KGS
Roller Max. RPM:	3200rpm

## Part III: Operating the Wood Chipper

---

---

It is useful to better familiarise yourself with the features of your wood chipper before beginning the steps outlined in this chapter.

---

### **WARNING**

- A) Ensure that you read and understand all instructions, safety precautions and/or warnings listed in **Part I: General Safety Rules** before operating this wood chipper. If any doubts or questions arise about the correct or safe method of performing anything found in this manual, please contact your supplier.
  - B) When operating the wood chipper, make sure you are standing in the safe operating area (**Operator Zone**). You must stay in the safe operating area at all times when the chipper is in operation. Never place any part of your body into a position which causes an unsafe operating condition.
  - C) Before loading and operating the wood chipper, always wear protective gear, including safety goggles, hearing protection, tight-fitting gloves without draw strings or loose cuffs, and steel-toed shoes.
  - D) Ensure that you know the correct and incorrect methods of chipping wood. Never use the machine in an incorrect or unsafe method.
- 

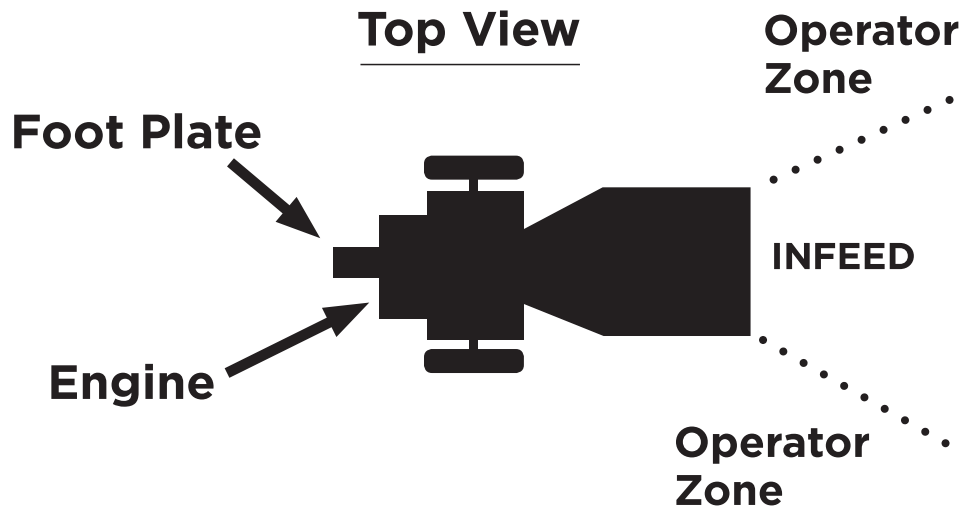
## Starting

- 1) Position your wood chipper on flat, dry ground, and then stop the front wheel with the brake. Make sure that the machine cannot be moved.
- 2) Make sure the fuel shut-off valve is in the "ON" position.
- 3) Move the choke control lever to the "CHOKE" position. This is usually only required if the engine is cold.)
- 4) Move the throttle control lever to the "FAST" position.
- 5) [Recoil Start] Turn the ignition switch to the "ON" position. Grasp the recoil starter handle and slowly pull until you feel resistance. Let the cord retract a little bit, then pull the cord rapidly to start the engine. One or two pulls usually starts the engine.  
[Electric Start] Turn and hold the key in the "START" position until the engine starts, then let the key return to the "RUN" position.
- 6) Move the choke control lever (if used for a cold engine) slowly back to the "RUN" position when the engine is running well.
- 7) If the wood chipper has not been running (cold engine), warm up the engine by running the engine at half-throttle for 3 to 4 minutes, then advance the engine throttle control to the maximum speed. Please note: the engine must always be at maximum speed when the machine is being used to chip wood.

## Stopping

- 1) Move the throttle lever to "IDLE"
- 2) [Recoil Start] Turn the ignition switch to the [OFF] position.  
[Electric Start] Turn the key to the [OFF] position.

## Operator Zone



## Wood Chipping

### NOTICE

The diameter of any wood/branches should be no bigger than 100mm.

---

### WARNING

**NEVER** place your hands into the chute when loading. This is very unsafe and could result in injury to your hands.

**NEVER** reach or step across the rail while the wood chipper is running. This is very unsafe and could result in personal injury, or even death.

---

## When Blocked

If the roller stops whilst chipping wood/branches, the engine should be stopped immediately. Take out the wood/branch which is stuck in the roller before resuming use of the wood chipper.

---

## Chipper Operation - Best Practices

### Additional Information for Operation and Best Practices

Thank you for purchasing one of our Titan Pro petrol garden chippers. Our machinery is designed to provide you with many years of service, but in order to do so, it is important to follow the practices outlined below to ensure it continues performing its best.

- Ensure that the machine is always ran on full revs when chipping/shredding.
- Running the machine on full revs is the only way to achieve optimal performance. If this is lowered, the machine will not chip as effectively as it otherwise could.
- When you are finished chipping, make sure the lower chamber/side chute/drum is clear, this can be achieved by running for 5 minutes at the end of usage to make sure all debris has been ejected from the machine.
- Before starting the machine again, please make sure nothing has fallen into the chipping chute that would block the machine.
- Any blockages caused by un-chipped debris remaining inside the machine can cause issues when starting your machine. It may cause a blockage, impacting the effectiveness of the machine in operation, or stop the machine from being able to turn freely. If the machine cannot turn freely, attempting to start the machine can cause damage included, but not limited to, burning the belt.

If you have any further questions on the operation of your chipper, please feel free to email our customer services department at [customerservices@titan-pro.co.uk](mailto:customerservices@titan-pro.co.uk)

## Part IV: Maintaining the Wood Chipper

---

---

Regular maintenance is the way to ensure the best performance and long life of your machine. Please refer to this manual and the engine manufacturer's user manual for maintenance procedures.

---

### **WARNING**

Before performing any maintenance procedures or inspections, stop the engine and wait at least 5 minutes to allow all parts to cool. Disconnect the spark plug wire, keeping it away from the spark plug. Disconnect the battery terminals (applicable to the electric start version only.)

---

### Regular Maintenance Checklist

Procedure	Before Each Use	Every 3 Hours	Every 25 Hours	Every 100 Hours
Check engine oil level	Δ			
Check general equipment condition	Δ			
Check belts	Δ			
Check tyre pressure			Δ	
Clean engine exterior and cooling			Δ	
Change engine oil	First time 5 hours		Δ	
Replace air filter			Δ	
Replace spark plug				Δ

### Engine Service

Refer to the engine manufacturer's user manual for engine maintenance.

## **Lubrication**

---

### **NOTICE**

All bearings on this wood chipper are sealed units and should have sufficient lubricant to last the life of your machine with normal use.

---

## Part III: Troubleshooting and Parts List

Most problems are easy to fix. Consult the Troubleshooting Table below for common problems and their solutions. If you continue to experience problems, contact your supplier.

### **WARNING**

Before performing any maintenance procedures or inspections, stop the engine and wait 5 minutes to allow all parts to cool. Disconnect the spark plug wire, keeping it away from the spark plug.

## Troubleshooting Table

Symptom	Possible Cause
<p><i>The engine won't start.</i></p> <p><i>(Please refer to the engine user manual for engine-specific procedures.)</i></p>	<ul style="list-style-type: none"> <li>• <i>Is the ignition switch in the "ON" position?</i></li> <li>• <i>Is the fuel shut-off valve on?</i></li> <li>• <i>Are you using clean, fresh fuel? If the fuel is old, change it. Use a fuel stabiliser if you keep fuel longer than 30 days.</i></li> <li>• <i>Is the spark plug clean? If the spark plug is dirty or cracked, replace it. If it's oily, leave it out, hold a rag over the plug hole and pull the recoil cord several times to blow out any oil in the cylinder, then wipe off the plug and reinsert it.</i></li> </ul>
<p><i>The engine lacks power or is not running smoothly.</i></p> <p><i>(Please refer to the engine user manual for engine-specific procedures.)</i></p>	<ul style="list-style-type: none"> <li>• <i>Check that the throttle lever is in the "RUN" position.</i></li> <li>• <i>Is the air filter clean? If it's dirty, change it following the procedure in the engine manufacturer's owner's manual.</i></li> <li>• <i>Is the spark plug clean? If the spark plug is dirty or cracked, replace it. If it's oily, leave it out, hold a rag over the plug hole and pull the recoil cord several times to blow out any oil in the cylinder, then wipe off the plug and reinsert it.</i></li> <li>• <i>Are you using fresh, clean, unleaded fuel? If it's old, change it. Use a fuel stabiliser if you keep fuel longer than 30 days.</i></li> <li>• <i>Does your engine have the right amount of clean oil? If it's dirty, change it following the procedure in the engine manufacturer's owner's manual.</i></li> <li>• <i>Check the oil level and adjust as needed.</i></li> </ul>
<p><i>Engine smokes.</i></p> <p><i>(Please refer to the engine user manual for engine-specific procedures.)</i></p>	<ul style="list-style-type: none"> <li>• <i>Check the oil level and adjust as needed.</i></li> <li>• <i>Check the air filter and clean or replace if needed.</i></li> <li>• <i>You may be using the wrong oil - too light for the temperature. Refer to your engine owner's manual for detailed information.</i></li> <li>• <i>Clean the cooling fins if they're dirty.</i></li> </ul>

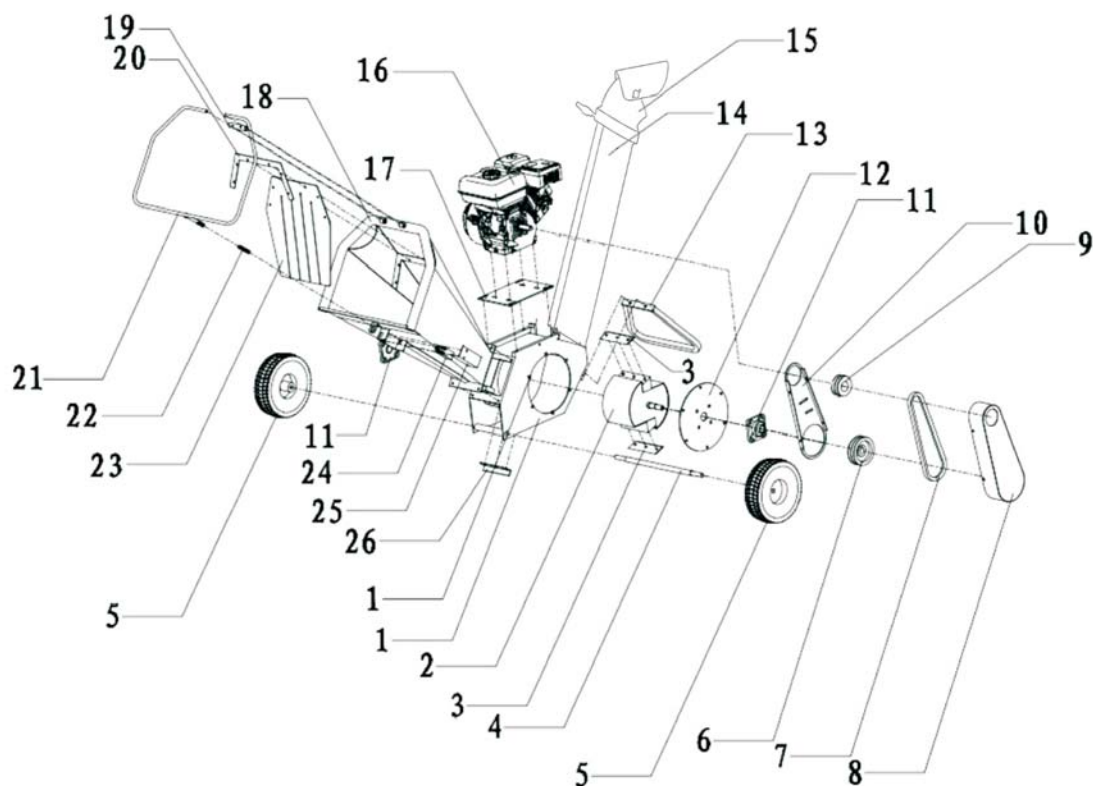
## Part V: Troubleshooting and Parts List

---

*Machine does not seem to have full chipping power.*

- *The belts may be too loose and slipping. Adjust or replace belts as needed.*

## Exploded View



Ref. No.	Description	Ref. No.	Description
1	Foundation	14	Discharge Chute
2	Roller	15	Chute Adjust
3	Blade	16	Engine
4	Wheel Axis	17	Engine Fixation Plate
5	Wheel	18	In-Feed
6	Pulley	19	Emergency Stop Fixation
7	Belt	20	Rubber Fixation
8	Belt Cover	21	Emergency Stop
9	Pulley	22	Spring
10	Belt Inner Cover	23	Rubber
11	Bearing	24	Switch
12	Bearing Fixation Plate	25	Switch Cover
13	Support Foot	26	Lower Blade



## EC Declaration of Conformity

**We, The Importer  
Titan Pro Ltd  
Declare that the product Titan 270cc Petrol Chipper  
Model – TP800ES**

Complies with the following directives:

**2006/42/EC**- Machinery Directive  
**2004/108/EC**-Electromagnetic Compatibility Directive  
**2005/88/EC** – Noise Emission in the Environment by equipment for use outdoors  
Directive.

The conformity assessment procedure was followed in accordance with Annex V of  
the **Directive 2000/14/EC**.

**Measured Sound Pressure level: 108.4db(A)**  
**Guaranteed Sound Power level: 110db(A)**

Standards and technical specifications referred to:

**EN13683:2003+A2:2011**

### Authorised Signature

A handwritten signature in black ink, appearing to read "C. Abbott", is written over a light grey rectangular background.

**Date: 26/05/2021**

Name/Title: Mr Charlie Abbott – Sales Director  
Titan Pro Ltd, Unit 11 Glenmore Business Park, Wend-AI Road, Blandford  
Forum, Dorset, DT11 7FP